

# ZELOS mounting system

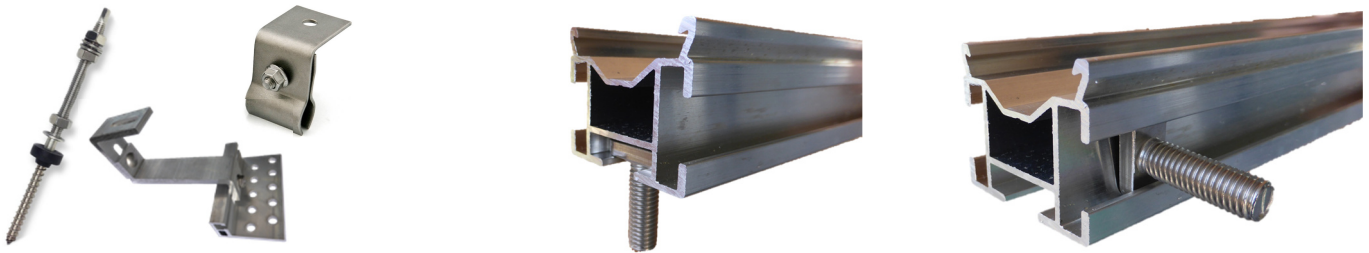
product data sheet



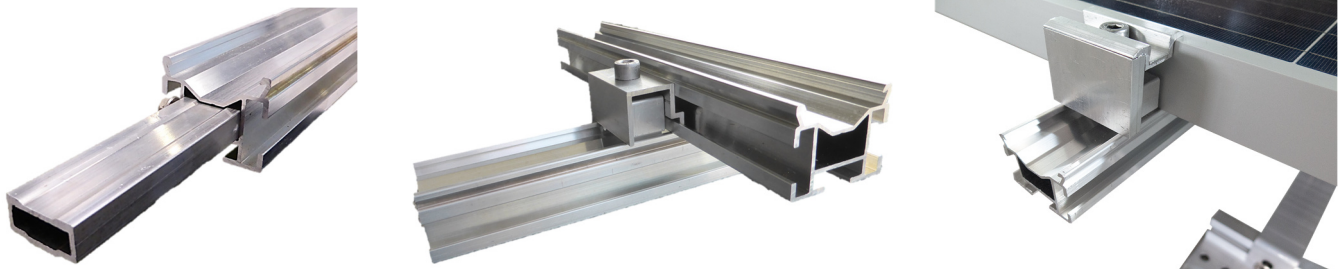
- + three times in two directions adjustable roof hook
- + universal profile connection
- + easy click system for quick module fastening
- + compact profile for small spans

## System design

With various adjustment and profile connection options, the ZELOS mounting system scores points during installation primarily with its adaptation to local conditions. The variable roof hook (RH) ZELOS ALU VAR as well as the ZELOS profile with its versatile channels ensure flexibility.



By using a hammer head screw M8 28/15 in the lower or lateral channel of the ZELOS profile, the ZELOS rail system is universally applicable for any roof connection (hanger bolt, roof hook, clamp).



ZELOS profile with internal ZELOS rail connector

Cross connection with ZELOS cross-connector and same profile

Middle clamp set + compensation profile for click-in

## Technical data

	ZELOS mounting system
application	all pitched roofs (rafter/ purlin roof; roof tiles/plates, plain tile roofing, slates, trapezoidal sheet metal, seamed roofing, sandwich panels, fibre cement panels)
roof mounting	hanger bolts; roof hooks; clamps (direct profile connection with hammer-head bolts M8 28/15 in the lower or side channel)
ZELOS RH ALU VAR	height-adjustable in the area of the battens and at the bracket to compensate a roof unevenness; force-locking grooves contact surface makes RH torsionally secure and form-fit
system structure	single ply; double ply in cross-bond
module orientation	parallel to the roof (for inclinations from 0° to 60°), upright/cross
rail length	3,2 m; 5,3 m (special lengths possible)
dimensions ZELOS rail	42 x 34 mm
span	depending on snow and wind load between 0,66 m and 2,28 m
weight ZELOS rail	0,79 kg/m
module fixing	clicking in the pre-assembled CHRONOS middle clamp set (for all framed modules of 29-51 mm frame height; can be combined with matching compensation profiles); universal end clamp independent of the frame height; mounting on the long module side
optional	module grounding when clamping the modules
materials	Alu EN AW 6063 T66 (RH base plate); Alu EN AW 6082 T66 (RH bracket and angel); Alu EN AW 6063 T66 (ZELOS system incl. clamping parts); stainless steel A2-70 (connecting elements)